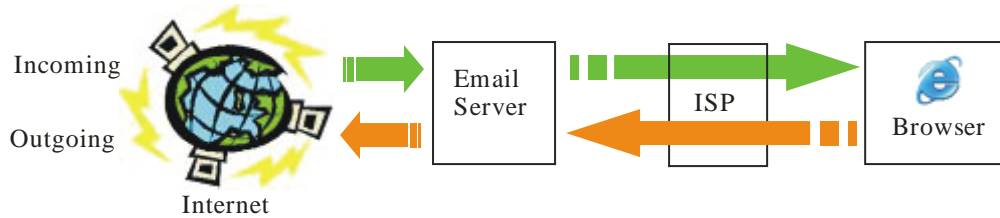


5.2 WebMail

<http://www.websuburb.com.au/HelpDesk/Mail/WebMail/tabid/191/Default.aspx>



WebMail bypasses your ISP and is an online equivalent of Outlook.

Step 1 – Open Internet Explorer

Step 2 – Enter the following URL <http://mail.XXXX.com> where XXXX.com is your domain name

Step 3 – Logon with your full email address and password.

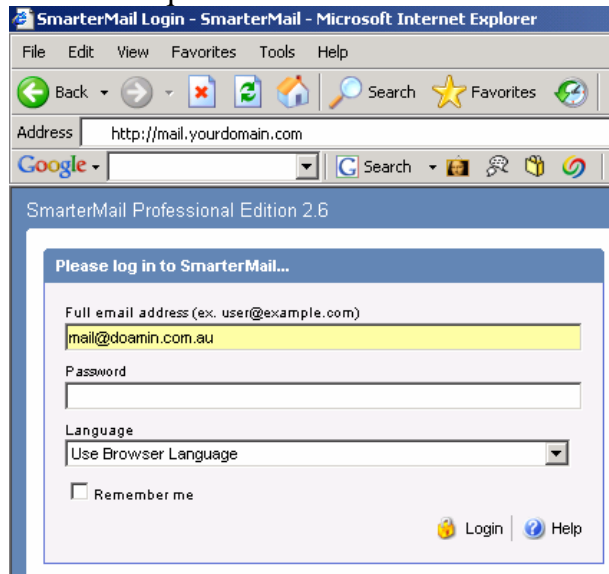


Figure:Logon screen

Step 4 – To change password Select My Settings from the Settings menu Enter new password, confirm and Save

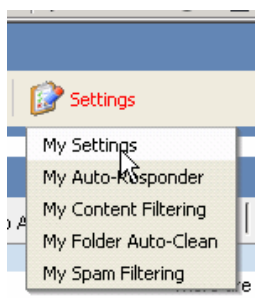


Figure:Settings menu example

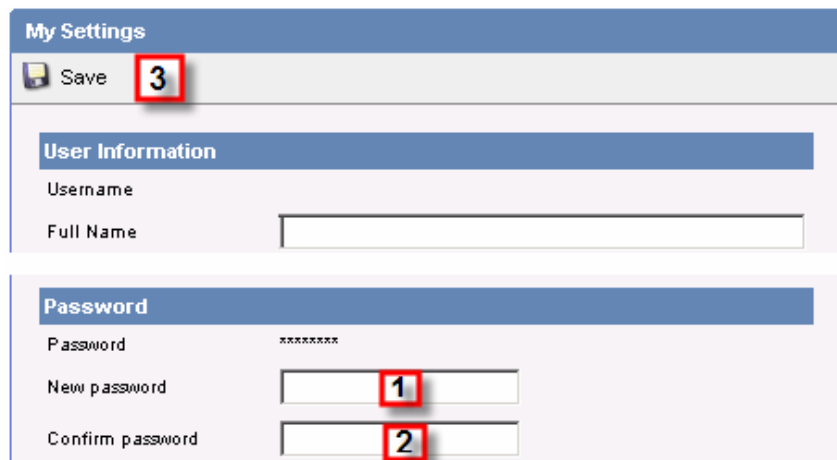


Figure: Saving the password example

This is the end of Session 2.

The next step is in Session 3 – Using Story Boards

<http://www.websuburb.com.au/HelpDesk/Content/StoryBoards/tabid/752/Default.aspx>