

## 6-4 Module Settings

<http://www.websuburb.com.au/HelpDesk/Modules/ModuleSettings/tabid/236/Default.aspx>

- Select the Settings option from the drop down menu option on the module.
- The Module settings page can be confusing at first because there appear to be 2 ‘Basic Settings’ and 2 ‘Advanced Settings’ sections.

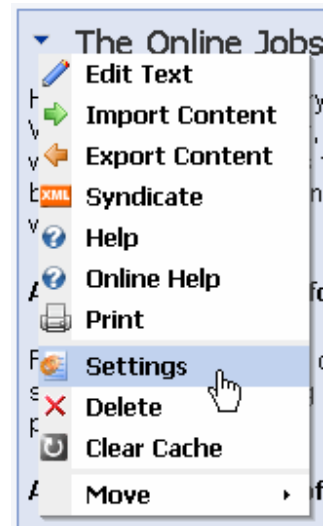


Figure: Module menu highlighting the Settings option

### 6-4.1 Module Settings

#### 6-4.1.1 Module Settings - Basic

These basic settings relate to the content of the module.

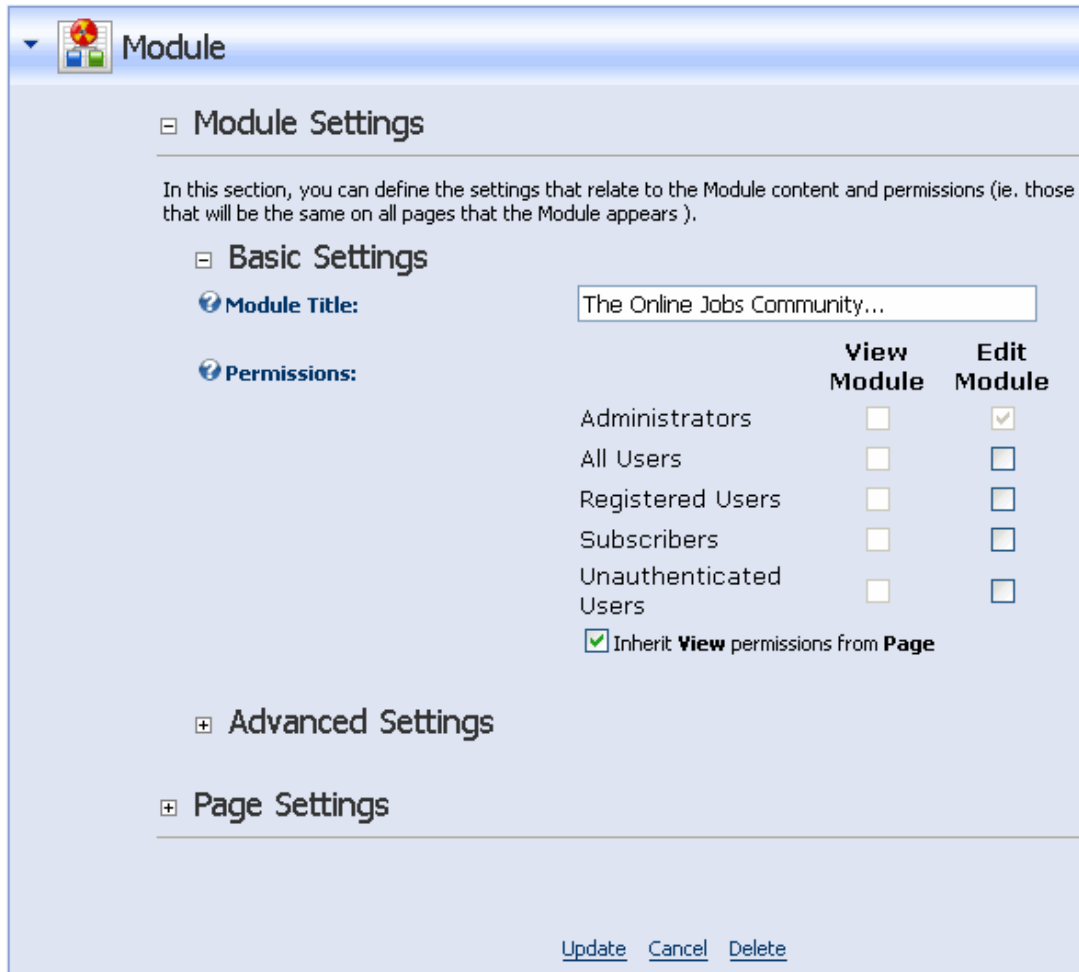


Figure: Module Basic Settings for updating authorisations

- Module Title – The module title is optional.
- Permissions – The module inherits its permission from the Page Permissions. The administrator may choose to over ride the inherited permissions to grant or remove privileges for specified user groups.

### 6-4.1.2 Module Settings - Advanced

The screenshot shows the 'Advanced Settings' section of a web application. It contains the following elements:

- Display Module On All Pages?**: A checkbox that is currently unchecked.
- Header:**: A large text input area with a vertical scrollbar.
- Footer:**: A large text input area with a vertical scrollbar.
- Start Date:**: A date input field followed by a 'Calendar' link.
- End Date:**: A date input field followed by a 'Calendar' link.

**Figure: Module Information Advanced Settings**

- **Display Module on All Pages** – An option to create the module once but display on every page on the site. A word of caution! The display property is an inherited property. Therefore deleting the ‘parent’ module will similarly delete the module from all pages. A ‘child’ module may be deleted without compromising the parent module. **We have found that a good rule to follow is to create the module on the home page before displaying to all pages.**
  - The home page is the least likely page to be deleted and therefore there is less risk of accidentally deleting the module when deleting a page.
  - Once the module has been displayed on all pages it is not possible to identify the ‘parent’ module in DotNetNuke. This makes management and maintenance of the module difficult in the future.
  - Refer to Move to Page in advanced Page Settings below in order to relocate the module to the Home page before selecting the Display option.
- **Header** – Used by the search functionality in the website
- **Footer** – Used by the search functionality in the website
- **Start Date** – Authorise a start date for the module to display. Leave blank to always display the module.
- **End Date** - Authorise an end date for the module to display.

## 6-4.2 Page Settings for Modules

### 6-4.2.1 Page Settings - Basic

Basic page settings relate to the display and behaviour of the module on the page.

**Page Settings**

In this section, you can define settings specific to this particular occurrence of the Module for this Page.

**Basic Settings**

**Icon:** **File Location:**  **File Name:**   
[Upload New File](#)

**Alignment:**  Left  Center  Right

**Color:**

**Border:**

**Visibility:**  Maximized  Minimized  None

**Display Container?**

**Allow Print?**

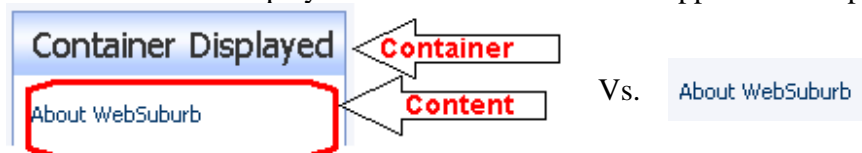
**Allow Syndicate?**

**Module Container:**  Host  Site  
 [Preview](#)

**Cache Time (secs):**

**Figure: Module display basic settings**

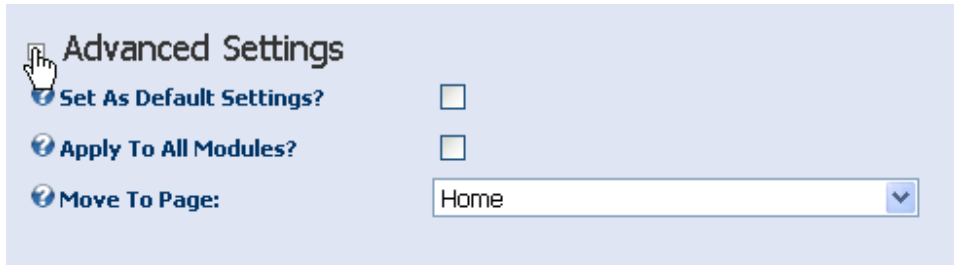
- Icon – Choose an icon to display next to the text in the module title.
- Alignment – Define the alignment of the module within the pane on the page.
- Color – the background colour of the module
- Border – Thickness of the container border around the module
- Visibility – We recommend that visibility be set to 'None' unless there is a compelling reason to adopt one of the alternate displays.
- Display Container – The Container is the title and outline display of the module to control the visual display of the module. Un-tick to suppress the display i.e.



- Allow Print – Enabling this option invokes functionality that opens the container only in a new page for printing. We recommend that this option be switched off for all modules.
- Allow syndicate – Allow syndicate enables the content of the module to be shared using the RSS module.
- Module Container – Enables a unique container skin for the current module.

- Cache time (secs) -

### 6-4.2.2 Page Settings - Advanced



**Figure: Module display advanced settings**

- Set as Default Settings – Change the default settings for all future modules on the site
- Apply to All Modules – Replicate the settings in the current modules to all modules in the site.
- Move to Page – Relocates the module to a new page. Use this option to ensure that a ‘parent’ module is located on the home page before selecting the Display Module on All Pages option above.

The next step in Session 3 is Module mania – exploring a few of the modules on offer in DotNetNuke

<http://www.websuburb.com.au/HelpDesk/Modules/StandardModules/tabid/462/Default.aspx>